



NU SKIN® TRI-PHASIC WHITE™

Activation | Synthesis | Expression



Is your inner beauty hidden behind a barrier of dull, discolored skin? As skin is affected by many different factors, including sun, stress, irritation, and hormones, discoloration may occur and skin that was once bright and even-toned may lose its luster.

NU SKIN® TRI-PHASIC WHITE™ works to lessen the effects of discoloration and can be effective in restoring skin's radiant glow.



As light illuminates the beauty of a translucent flower petal, a luminous butterfly wing, or a brilliant diamond, a radiant complexion lets your inner beauty shine through. In nature, these beautiful qualities can be explained by science. In you, a translucent, luminous, brilliant complexion can be revealed using a scientific method. Now you can achieve your beauty potential with the scientifically advanced method of NU SKIN® TRI-PHASIC WHITE.™





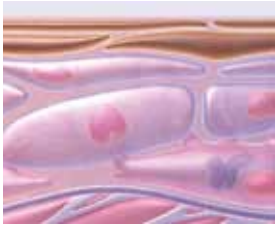
MAKE A BRILLIANT DISCOVERY.

Nu Skin® Tri-Phasic White™ systematically enhances the skin brightening process. This scientific method works to minimize the **activation, synthesis, and expression** of discoloration on the skin's surface. Clinically proven, the key ingredient technologies featured in each product combine to create the most comprehensive skin brightening system available.





Physiology of Skin Pigmentation



Skin discoloration and overall skin darkening is a result of dark pigment or melanin on the surface of the skin due to a three phase process—*activation*, *synthesis*, and *expression*.



Activation Phase—When various environmental and genetic factors trigger the activation of the melanocyte, signal molecules become active and bind to their receptors causing cells to initiate melanin synthesis.



Synthesis Phase—When the melanocyte is activated, the enzyme tyrosinase switches to its active form and converts amino acid tyrosine to a molecule called Dopa that is then converted into Dopaquinone. After a series of reactions, Dopaquinone is converted into either dark melanin (eu-melanin), associated with dark skin, or light melanin (phaeo-melanin), predominant in fair skinned complexions.



Expression Phase—Melanin granules are packaged into melanosome vesicles that migrate across and up the dendrites, finger-like projections that extend up into the skin cells. These melanin laden skin cells are brought to the surface and become visible through the expression of discoloration.

TRI-PHASIC WHITE™ | CLEANSE R



Brighten your complexion every time you cleanse. Tri-Phase White™ Cleanser helps inhibit the *expression* of discoloration on the surface of the skin. Featuring creatinine, this pearlescent, moisturizing mousse cleanses and brightens skin for a fresh, glistening appearance. This cleanser works to improve skin tone and texture while leaving skin feeling silky-soft.

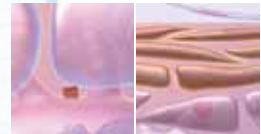


Expression

TRI-PHASIC WHITE™ | TONER



Calm your skin. To enhance the skin brightening process, Tri-Phasic White™ Toner features Fairtrex™ and carnosine. Fairtrex™ targets the *expression* phase by working to gently shed existing pigment from the skin's surface, while carnosine, a powerful antioxidant, helps calm the skin and target the *activation* phase, helping to prevent new skin discoloration. Tri-Phasic White™ Toner is a non-acid cell renewal complex that can be effective in targeting discoloration, leaving skin with a luminous and even tone.



Activation

expression

TRI-PHASIC WHITE™ | ESSENCE



Reveal your inner beauty. Vital for contributing to brilliant, translucent skin tone, Tri-Phasic White™ Essence is formulated with Brightex.™ This proprietary combination of ingredient technologies works in multiple ways to illuminate your complexion by targeting the series of reactions in the critical *synthesis* phase. Essential to the skin brightening process, Tri-Phasic White™ Essence should be used as part of your daily regimen.



Synthesis

TRI-PHASIC WHITE™ | DAY MILK LOTION



Maintain a luminous complexion. Tri-Phasic White™ Day Milk Lotion moisturizes while helping target the daytime factors that can trigger discoloration. Featuring hexapeptide-2, which works to inhibit the *activation* of complexion-dimming discoloration from forming, and UVA/UVB (SPF15) sunscreen to help prevent ultraviolet rays—the most common cause of *activation*—from generating an uneven skin tone. This lotion helps your beauty clearly shine through.

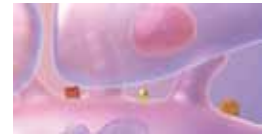


Activation

TRI-PHASIC WHITE™ | NIGHT CREAM



Discover a more brilliant skin tone while you sleep. Specially formulated Tri-Phasic White™ Night Cream features diacetyl boldine to help target the *activation* phase. By working to inhibit stress receptors, diacetyl boldine can be effective in blocking the *activation* of discoloration to reveal a more brilliant skin tone as you sleep.



Activation

The scientific method for brilliant skin.



MORNING REGIME N

1. Moisten face and neck with warm water. Work a small amount of **Cleanser** into a light lather and gently massage both face and neck. Rinse thoroughly with warm water and pat dry. Avoid eye area.
2. Apply **Toner** to cleansed skin with a cotton pad.
3. Dispense a small amount of **Essence** serum and apply a thin layer to face and neck.
4. After applying Essence, apply **Day Milk Lotion** liberally to face and neck. Reapply as needed throughout the day.



NIGHT REGIME N

1. Moisten face and neck with warm water. Work a small amount of **Cleanser** into a light lather and gently massage both face and neck. Rinse thoroughly with warm water and pat dry. Avoid eye area.
2. Apply **Toner** to cleansed skin with a cotton pad.
3. Dispense a small amount of **Essence** serum and apply a thin layer to face and neck.
4. After applying Essence, apply **Night Cream** liberally to face and neck.



NU SKIN® TRI-PHASIC WHITE™

Activation | Synthesis | Expression

The Nu Skin® Tri-phasic White™ System address all three discoloration phases:

Individual products:	Activation	Synthesis	Expression
Tri-phasic White™ CLEANSER			Creatinine
Tri-phasic White™ TONER	Carnosine		Fairtex™
Tri-phasic White™ ESSENCE		Brightex™	
Tri-phasic White™ DAY MILK LOTION	Hexapeptide-2 SPF 15 UVA/UVB		
Tri-phasic White™ NIGHT CREAM	Diacetyl Boldine		



75 West Center Street • Provo, Utah 84601 • www.nuskin.com
©2004 • All rights reserved • 01 102734 90018333/ 1