



NU SKIN[®]

BODY CARE



Nu Skin® body care products contain ingredients designed to nourish, condition, and soothe. With these advanced formulations, every inch of you will feel divine—day and night.

BODY CARE ESSENTIALS PACKAGE

This set includes Perennial® Intense Body Moisturizer, Liquid Body Lufra, and Liquid Body Bar.

ITEM 01102463



PERENNIAL® INTENSE BODY MOISTURIZER

A body moisturizer that helps to reinforce the skin's natural defense mechanisms and protect against external aggressors. Help your skin remain comfortable and healthy looking year round.

ITEM 01100875 8.4 OZ.

HELP YOUR SKIN THRIVE

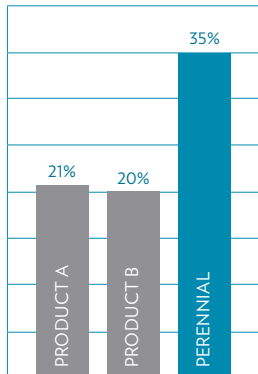
Now your dry skin can benefit from the same protection that nature uses to guard tender flower bulbs against harsh environments. Perennial® Intense Body Moisturizer is the first all-over moisturizer to contain IBR-Dormin®—a natural compound derived from narcissus bulbs that has been scientifically shown to increase cellular durability, maximizing the skin's natural defense mechanisms against environmental aggressors. Perennial® helps your skin remain comfortably soft and healthy looking year round.

*IBR-Dormin® is a registered trademark of IBR, Ltd.

PROVEN SKIN MOISTURE RETENTION

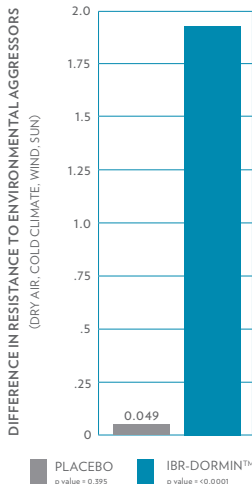
One of the most significant attributes of an effective moisturizer is the ability to reduce water loss through the upper layers of the skin. By enhancing the skin's natural moisture barrier, Perennial® has been scientifically shown to significantly reduce the amount of water leaving the skin. Over an eight-day period of product usage, a scientific study of transepidermal water loss (TEWL) showed a 35 percent improvement in the skin's moisture retention function. Other leading moisturizers tested alongside Perennial® were unable to show a statistically significant increase in the skin's moisture retention function under the same conditions.

TEWL ASSESSMENT



CLINICAL STUDY ON IBR-DORMIN® EFFECTS

During harsh environments when narcissus bulbs are dormant, dormins slow the plants' processes enabling the plant to endure environmental stress. IBR-Dormin® has a similar effect on human skin and can provide better skin resistance to stress. An evaluation of skin sensitivity, irritability, fatigue, tautness, suppleness, comfort, and overall protection by Perennial® showed that IBR-Dormin® was 283 percent more successful than a placebo at protecting against environmental aggressors.



BODY SMOOTHER

Seal in moisture after showering or bathing. This quick-absorbing body lotion locks in moisture to prevent tightness while nourishing skin with aloe vera, algae extract, and vitamins A and E.

ITEM 01101239 8.4 OZ.



FYI

Although a long, hot bath or shower sounds relaxing, it can actually pull the protective, natural oils out of your skin, causing dryness and itching. Keep the water temperature warm, not hot, and apply Body Smoother after showering while your skin is still moist—locking in necessary moisture.



HAND LOTION

Skin drinks in this light lotion so your hands are left soft and hydrated. Pamper your hands with the perfect blend of softening conditioners and moisture-attracting humectants for a softer, smoother touch.

ITEM 01110329 4.2 OZ.

BODY BAR

This is a gentle yet effective cleanser in the traditional form of a bar, but with additional skin softening benefits. pH balanced Body Bar is an 100% soap-free cleanser scientifically formulated to condition the skin and help protect against dryness. (Great for the entire family.)

ITEM 01 110353 4 OZ. BAR

ITEM 01 110354 5-PACK



DEMONSTRATION

Healthy skin maintains a slightly acidic pH of 5.5-6.5. Many standard soap brands are alkaline or basic, meaning their pH range is 8.5-10. Disrupting the pH balance within the skin can cause the protective moisture barrier to breakdown, which can be especially detrimental for normal to dry complexions. Common alkaline soaps, especially bar soaps, will strip the natural lipids that maintain healthy skin and protect it from outside aggressors.

To demonstrate the healthy pH range of our cleansers, simply dip a piece of litmus paper, which turns varied colors in the presence of different pH levels, into the cleanser and check the reading against the color code on the litmus scale. The ideal pH for cleansers is between 5-7.5.

Nu Skin uses only soap-free formulas that gently cleanse the skin with mild surfactants. We carefully formulate our cleansers to a gentle pH range of 5-7.4, helping maintain the skin's natural protective moisture barrier.



LIQUID BODY BAR

The aromatic grapefruit scent captures your senses while the rich and creamy soap free formula effectively removes dirt, oil, and impurities. Featuring a unique blend of humectants to drench your skin with conditioning moisture, Liquid Body Bar offers a better kind of clean, conditioning moisture.

ITEM 01 101216 8.4 OZ.

ITEM 01 101217 16.9 OZ.



LIQUID BODY LUFRA

Liquid Body Lufra is an all-over body exfoliant that gently eases away dead skin cells and excess oil to give your skin a healthy, polished appearance and feel. Liquid Body Lufra revitalizes skin, giving it a luminous glow.

ITEM 01 102717 8.4 OZ.

FYI

Many customers rave about the fantastic results Liquid Body Lufra delivers when shaving their legs. The exfoliating action of the walnut shells removes dead cells so the razor can get a closer, smoother shave. Your legs will feel incredibly soft and silky after shaving with Liquid Body Lufra.



BODY CLEANSING GEL

For skin that feels clean, fresh, and soft, use this gentle soap-free cleansing gel, which combines mild cleansers with natural aloe vera to cleanse and condition.

ITEM 01 101223 8.4 OZ.

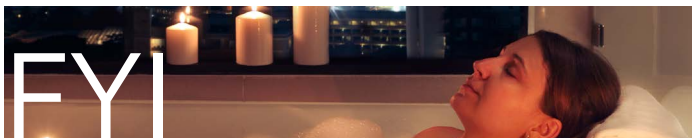
ITEM 01 101224 16.9 OZ.



HERBAL MINERAL BATH

Herbal Mineral Bath contains 21 herbal extracts. While many of these extracts create a relaxing aromatherapeutic atmosphere to melt away stress and tension, the others provide skin nurturing and conditioning benefits for a luxuriously soft and silky after-bath feel from head to toe.

ITEM 01 101225 16.9 OZ.



HERE ARE A FEW TIPS TO MAKE YOUR BATHING EXPERIENCE MORE ENJOYABLE:

- Use a bath pillow so you can completely relax and let go of tension.
- Wash with a silky smooth bath sponge for the ultimate in comfort and relaxation.
- Dim the lights to calm the senses.
- Light a candle for a soothing ambiance.
- Quietly play your favorite music to take your mind off of worries.

D.I.Y.

DO IT YOURSELF

SILKY SOFT LEGS

INGREDIENTS:

¼ cup Liquid Body Lufra
12 drops Epoch® Tea Tree

DIRECTIONS:

Mix Liquid Body Lufra with Epoch® Tea Tree. Apply mixture to legs and then shave. You'll enjoy a soothing experience and incredibly soft legs.



D.I.Y.

DO IT YOURSELF

SOOTHING BODY MOISTURIZER

INGREDIENTS:

¼ cup Perennial®
12 drops Epoch® Frankincense

DIRECTIONS:

Mix Perennial® with Epoch® Frankincense and massage into your skin. The expressive aroma of Frankincense combined with the moisturizing benefits of Perennial® will leave your skin feeling soft and smooth.



DISCOVER THE



THE BEST YOU



NU SKIN.



© 2016 NSE Products, Inc.
nuskin.com
01 005653 Single