

Charging your LumiSpa device

Place your LumiSpa device on the charging base and charge overnight.

A full charge will last 7 to 10 days with normal usage.

Do not use the plug-in detachable power supply in a wet environment.

STEP 1

1. Moisten face with warm water and apply ageLOC® LumiSpa™ treatment cleanser.

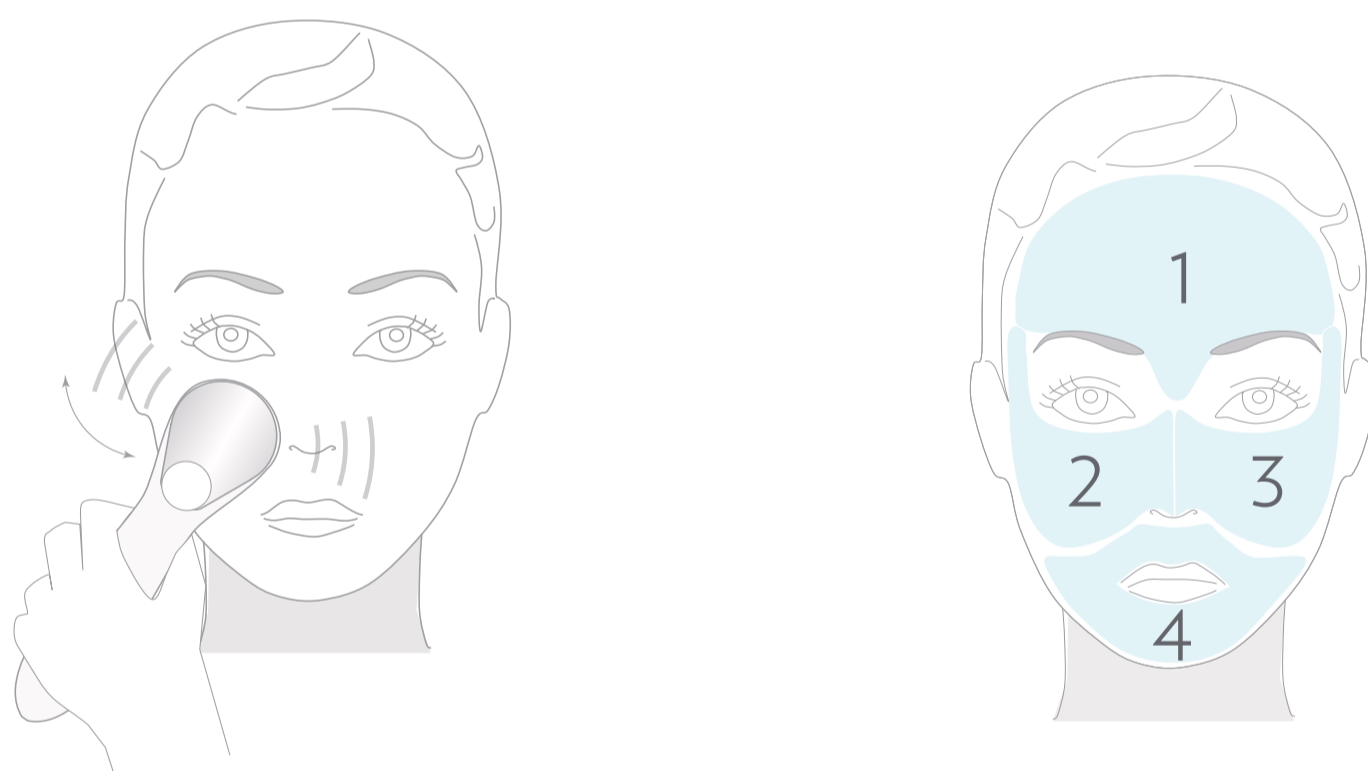
STEP 2

2. Wet treatment head and then turn device on by pressing On/Off button.

Slowly glide the treatment head back and forth over face using broad strokes.

The ageLOC LumiSpa device will pause quickly three times every 30 seconds to prompt you to move from one area of the face to the next.

Do not use a scrubbing motion or press too hard.



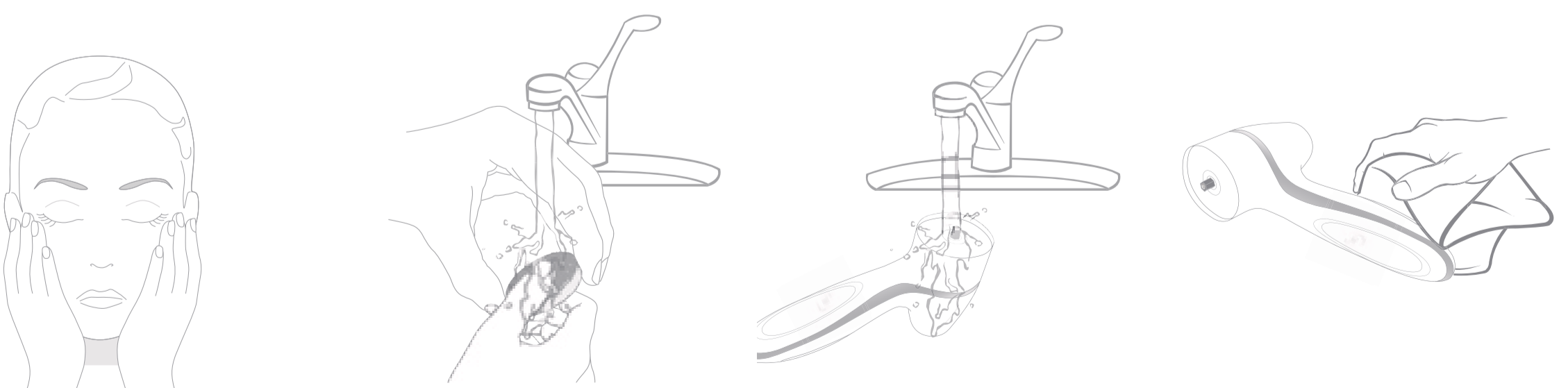
STEP 3

3. Device will stop after your treatment is complete and will turn off automatically.

4. Rinse your face and pat dry.

5. Remove the treatment head from the device. Rinse it with water while rubbing to remove residual treatment cleanser. Dry thoroughly. Rinse device under water. Wipe device dry with washcloth.

Ensure device is completely dry before placing in charging stand.



Your face is now prepared for your next skin care regimen step.