

# NU COLOUR® LASH + BROW SERUM



## MEET LASH + BROW SERUM

Want seriously wow lashes and brows? Nu Colour Lash + Brow Serum can help you go from blah to boom in as little as four weeks. Our powerful formula is designed to give you lovelier lashes and brows by targeting their underlying nourishment and conditioning needs. That means lashes and brows that look longer, thicker, bolder, shinier, and healthier—all in one. It's the ultimate, clinically proven serum for all your lash and brow needs. Plus, it's ophthalmologist-tested, formulated free of prostaglandin, and safe to use even if you wear contacts. Twist open a tube today and get lash and brows that will blow your friends away.

## WHY YOU'LL LOVE IT

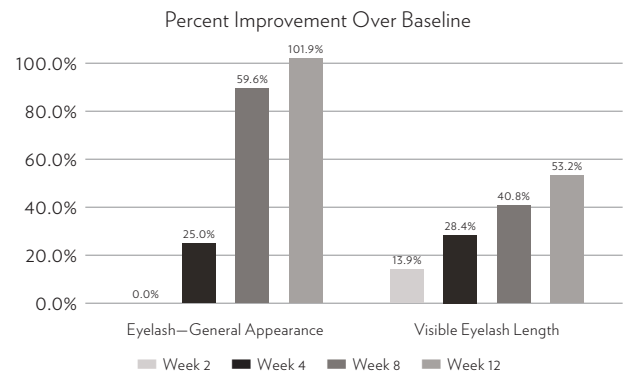
- Promotes visibly longer, thicker, fuller, shinier lashes.
- Supports visibly bolder, fuller, more luxurious and less brittle brows.
- Strengthens, nourishes, moisturizes, and conditions brows and lashes.
- Helps visibly transform brows and lashes in as little as 4 weeks, with greater results with longer use.
- Helps brows and lashes look healthier.
- Improves overall lash and brow appearance.
- Features a lightweight and non-irritating formula.
- Safe and easy to use.
- Safety-Ophthalmologist tested.
- Suitable for contact lens wearers.
- Mindfully formulated without parabens, silicone, phthalates, alcohol, dyes, fragrance, oil, or prostaglandin.
- Features plastic-free packaging made from 100% organic plant fiber polymer (PFP).

## WHAT POWERS IT

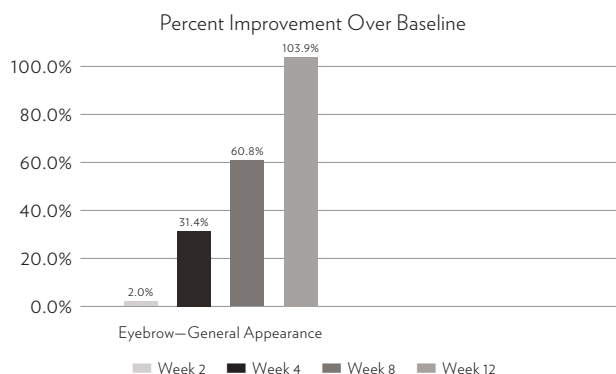
- **Biotinoyl Tripeptide-1**—helps eyelashes look thicker, longer, and stronger.
- **Red Clover and Peptide Blend**—helps hair look stronger, thicker, and fuller and helps prevent breakage.
- **Myristoyl Pentapeptide-17**—helps eyelashes look thicker, denser, and longer.
- **Larch Wood and Camellia Sinensis Leaf Extracts**—helps hair appear thicker and stronger.
- **Clover Sprout Extract**—helps visibly increase hair density and strengthen hair.

## CLINICALS THAT PROVE IT

Nu Skin commissioned a clinical study to evaluate the results of using Nu Colour Lash + Brow Serum for 12 weeks. Clinical grading of visible results were assessed at baseline, week 2, week 4, week 8, and week 12.



# NU COLOUR® LASH + BROW SERUM



In the same study, participants were asked for their self-perception of results. The following percentages of participants agreed with these statements:

## Lashes

- 100% agreed “My lashes look fuller than before using this product.”
- 96.7% agreed “My lashes are conditioned and protected.”
- 96.7% agreed “My lashes look thicker and more voluminous.”
- 96.7% agreed “My lashes look revitalized.”
- 96.7% agreed “My lashes feel nourished and conditioned.”
- 96.7% agreed “My lashes appear healthier after using this product.”
- 96.7% agreed “This product strengthens my lashes.”
- 93.3% agreed “This product lengthens the appearance of my lashes.”

## Brows

- 100% agreed “My brows are visibly bolder.”
- 100% agreed “The product provides a luxurious look.”
- 100% agreed “My brows feel nourished and conditioned.”
- 100% agreed “My brows seem less brittle (they feel stronger).”
- 100% agreed “My brows look more youthful.”
- 100% agreed “My brows are more manageable.”
- 96.7% agreed “My brows look more defined.”
- 96.7% agreed “The product helps combat brow breakage.”

## HOW TO USE IT

After cleansing and drying the application area, apply a thin layer of the serum to the root of your eyebrows and along the root of your upper and lower lash line. Use daily, both morning and evening.

## TRY THESE WITH IT

- Nu Colour® Curling Mascara
- ageLOC® LumiSpa® iO Accent & IdealEyes
- Nutricentials® Eye Love Bright Eyes Illuminating Eye Cream

## LEARN MORE ABOUT IT

**How often do I need to apply Nu Colour Lash + Brow Serum?**

For best results, use Lash + Brow Serum twice a day.

**Can I leave Nu Colour Lash + Brow Serum on overnight?**

Yes. After applying the serum, just let it dry for 1–2 minutes before lying down.

**How soon will I start to see results?**

With twice-daily use, you should see results in as little as 4 weeks, with greater results with longer use. Results will vary by individual.

**Is Nu Colour Lash + Brow Serum ophthalmologist-tested?**

Yes! Our serum is ophthalmologist-tested and formulated to be as gentle as possible. If irritation occurs, rinse your eyes and brows with water thoroughly and discontinue use. Contact your physician if irritation persists.

**Will Nu Colour Lash + Brow Serum change my eye color or cause skin discoloration?**

No. Our clinically tested, high-performance formula does not contain harmful chemicals that are known to cause this reaction.

**Can I use Nu Colour Lash + Brow Serum with my lash extensions?**

Our serum is oil-free, so it shouldn't damage extensions. It would be best to check with the manufacturer or provider of your lash extensions prior to use.

**How does Nu Colour Lash + Brow Serum support Nu Skin's commitment to become more sustainable?**

As responsible stewards of our planet, we have proudly designed the Nu Colour Lash + Brow Serum tube with plastic-free packaging made from 100% organic Plant Fiber Polymer (PFP). By purchasing Nu Colour Lash + Brow Serum, you're joining us in taking an active, engaged stride to ensure the future is bright for both the planet and each of us.

Visit [www.nuskin.com/sustainability](http://www.nuskin.com/sustainability) for more information and details on how to recycle.

# NU COLOUR® LASH + BROW SERUM

## WHAT'S IN IT

Water (Aqua), Glycerin, Butylene Glycol, 1,2-Hexanediol, Trifolium Pratense (Clover) Flower Extract, (Trifolium Pratense (Clover)/Vigna Radiata) Sprout Extract, Avena Sativa (Oat) Kernel Extract, Acetyl Tetrapeptide-3, Biotinoyl Tripeptide-1, Myristoyl Pentapeptide-17, Larix Europaea Wood Extract, Panthenol, Sodium PCA, Sodium Lactate, Arginine, Aspartic Acid, Lecithin, Pullulan, Phenylalanine, PCA, Sodium Hyaluronate, Glycine, Alanine, Serine, Histidine, Valine, Isoleucine, Proline, Threonine, Dextran, Camellia Sinensis Leaf Extract, Silica, Xanthan Gum, Sclerotium Gum, Zinc Chloride, Tetrasodium Glutamate Diacetate, Citric Acid, Sodium Hydroxide, Potassium Sorbate, Hydroxyacetophenone.